

## DP.A.1. Animals used by species

Animal Species	Number of Animals	%
Mice	134,542	67.62%
Rats	39,191	19.70%
Guinea-Pigs	597	0.30%
Hamsters (Syrian)	20	0.01%
Hamsters (Chinese)		
Mongolian gerbil	36	0.02%
Other Rodents	173	0.09%
Rabbits	894	0.45%
Cats	3	0.00%
Dogs	224	0.11%
Ferrets	144	0.07%
Other carnivores	884	0.44%
Horses, donkeys & cross-breeds	147	0.07%
Pigs	7,479	3.76%
Goats	12	0.01%
Sheep	30	0.02%
Cattle	250	0.13%
Prosimians		
Marmoset and tamarins		
Cynomolgus monkey		
Rhesus monkey		
Vervets Chlorocebus spp.		
Baboons		
Squirrel monkey		
Other species of New World Monkeys (Ceboidea)		
Other species of Old World Monkeys (Cercopithecoidea)		
Other species of non-human primates		
Apes		
Other Mammals	28	0.01%
Domestic fowl	2,479	1.25%
Other birds	325	0.16%
Reptiles	248	0.12%
Rana	5	0.00%
Xenopus	55	0.03%
Other Amphibians	26	0.01%
Zebra fish	1,535	0.77%
Other Fish	9,653	4.85%
Cephalopods		
<b>Total</b>	<b>198,980</b>	

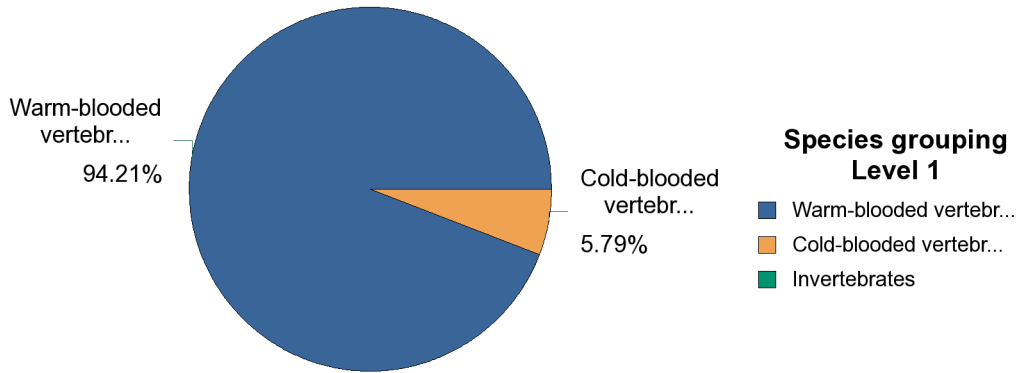
Species grouping Level 1	Number of Animals
Warm-blooded vertebrates	187,458
Cold-blooded vertebrates	11,522
Invertebrates	
<b>Total</b>	<b>198,980</b>

Species grouping Level 2	Number of Animals
Mammals	184,654
Birds	2,804
Fish	11,188
Amphibians	86
Reptiles	248
Cephalopods	
<b>Total</b>	<b>198,980</b>

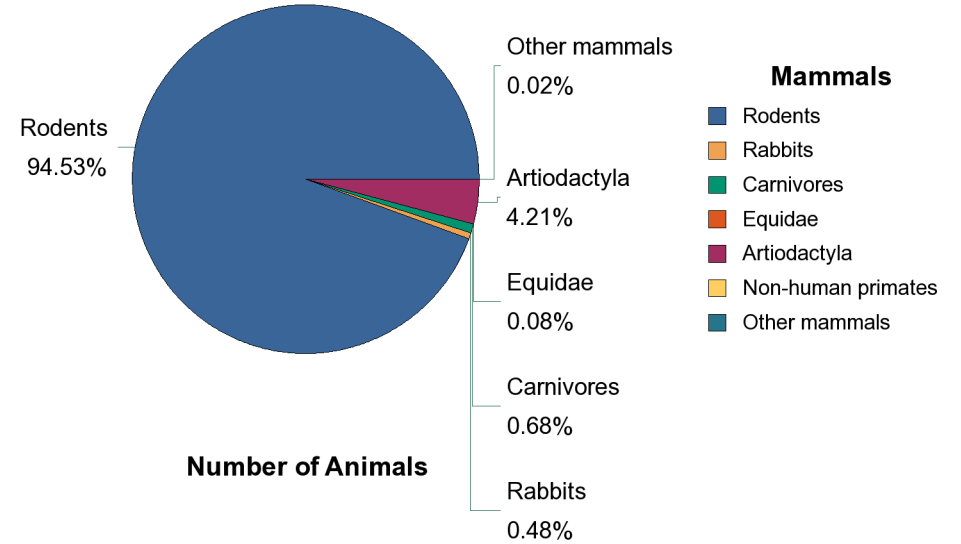
Mammals	Number of Animals
Rodents	174,559
Rabbits	894
Carnivores	1,255
Equidae	147
Artiodactyla	7,771
Non-human primates	
Other mammals	28
<b>Total</b>	<b>184,654</b>

Non-human primates	Number of Animals
Prosimians	
New World Monkeys	
Old World Monkeys	
Apes	
<b>Total</b>	

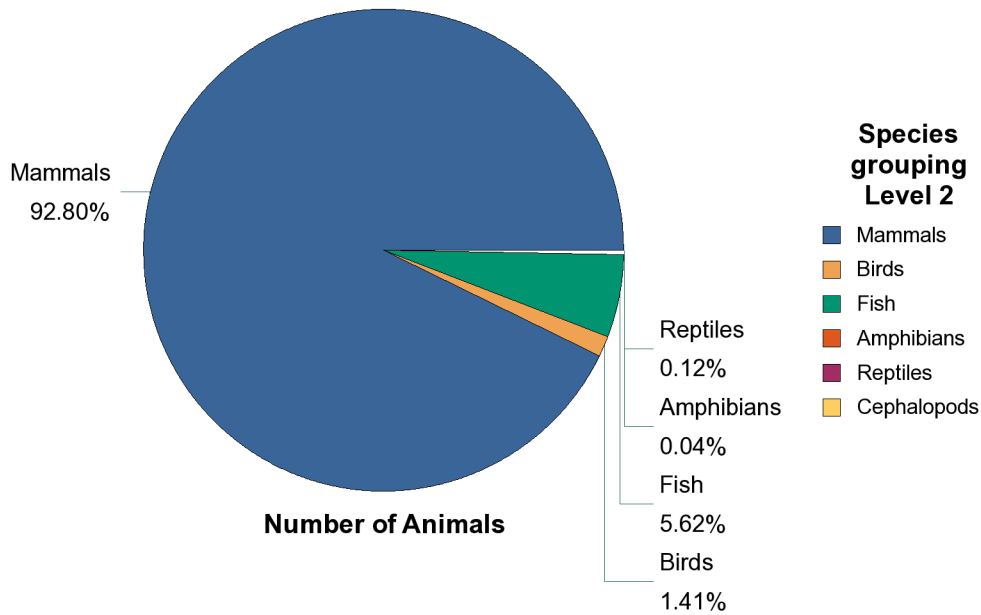
## DP.A.1. Animals used by species



**Number of Animals**



**Number of Animals**



**Number of Animals**