

DP.A.1. Animals used by species

Data inclusion criteria

Report year: 2015 (APPROVED)

Country: Denmark

EU Submission: ALL

Genetic status: ALL

Animal Species: ALL

Species grouping Level 1: ALL

Species grouping Level 2: ALL

Mammals: ALL

Non-human primates: ALL

Submission Id: ALL

Id 1: ALL

Id 2: ALL

Id 3: ALL

Narrative

This report shows the number of animals of each species used in procedures for the first time, and for which the procedures were completed this year.

The Data Provider reports allow the creation of standard (public) reports

- before the reports are available for the general public (i.e. non-published data), and
- including information on non-EU submissions (as a default) i.e. Member State specific national data e.g. on animals killed for tissue/organs – unless specifically excluded in the data filtering criteria when selecting the report.

Data filtering criteria has been complemented with an option to filter data into the report also at the level of species groupings.

It should be remembered that by including one data filtering criterion, all others from that selection type are by default excluded. For example: if selecting "mouse" as the animal species, the data on the report will only show the results containing mice. However, if at the same time an incompatible selection is made e.g. selecting species grouping level 2 "birds" (excluding all other groups of species covering also "mammals" (including "mouse")), no data is shown in the report, as the two selections are incompatible.

DP.A.1. Animals used by species

Animal Species	Number of Animals	%
Mice	153,864	63.67%
Rats	48,171	19.93%
Guinea-Pigs	2,643	1.09%
Hamsters (Syrian)	172	0.07%
Hamsters (Chinese)		
Mongolian gerbil		
Other Rodents	86	0.04%
Rabbits	1,661	0.69%
Cats	59	0.02%
Dogs	68	0.03%
Ferrets		
Other carnivores	872	0.36%
Horses, donkeys & cross-breeds	109	0.05%
Pigs	10,402	4.30%
Goats	11	0.00%
Sheep	44	0.02%
Cattle	514	0.21%
Prosimians		
Marmoset and tamarins		
Cynomolgus monkey		
Rhesus monkey		
Vervets Chlorocebus spp.		
Baboons		
Squirrel monkey		
Other species of New World Monkeys (Ceboidea)		
Other species of Old World Monkeys (Cercopithecoidea)		
Other species of non-human primates		
Apes		
Other Mammals	35	0.01%
Domestic fowl	2,335	0.97%
Other birds	408	0.17%
Reptiles	265	0.11%
Rana		
Xenopus	64	0.03%
Other Amphibians	26	0.01%
Zebra fish	2,530	1.05%
Other Fish	17,318	7.17%
Cephalopods		
Total	241,657	

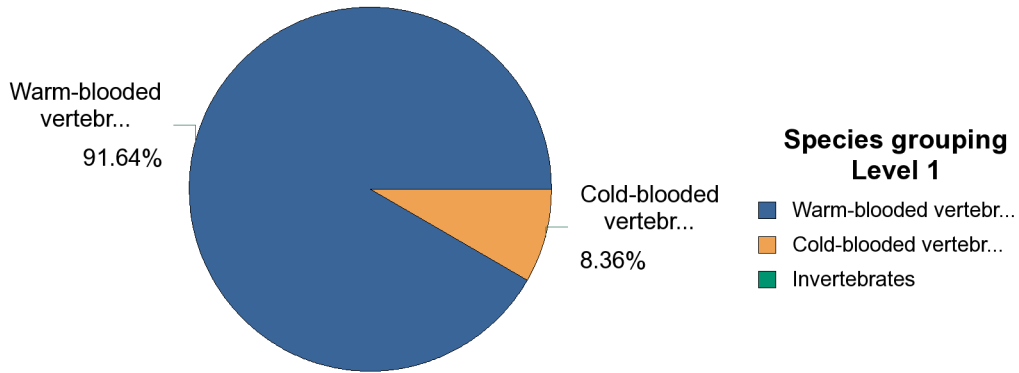
Species grouping Level 1	Number of Animals
Warm-blooded vertebrates	221,454
Cold-blooded vertebrates	20,203
Invertebrates	
Total	241,657

Species grouping Level 2	Number of Animals
Mammals	218,711
Birds	2,743
Fish	19,848
Amphibians	90
Reptiles	265
Cephalopods	
Total	241,657

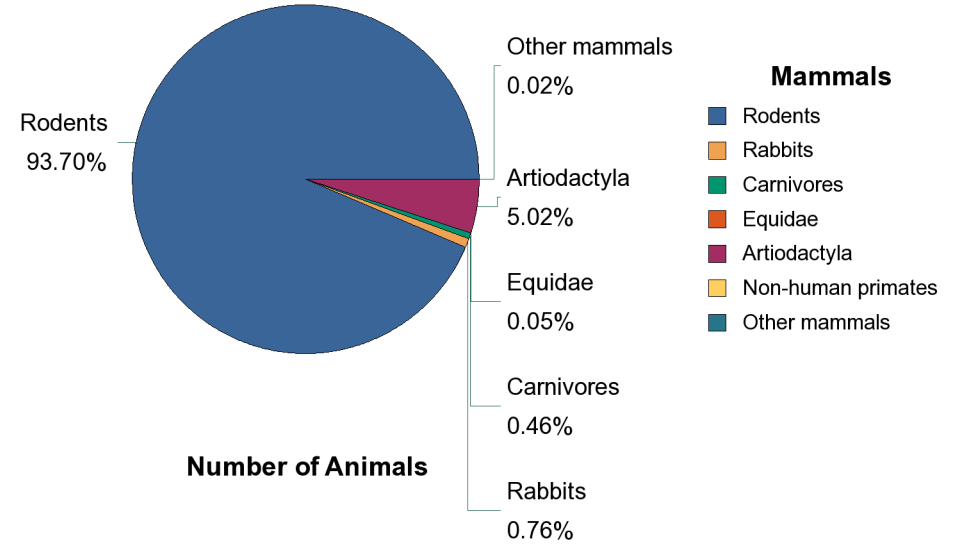
Mammals	Number of Animals
Rodents	204,936
Rabbits	1,661
Carnivores	999
Equidae	109
Artiodactyla	10,971
Non-human primates	
Other mammals	35
Total	218,711

Non-human primates	Number of Animals
Prosimians	
New World Monkeys	
Old World Monkeys	
Apes	
Total	

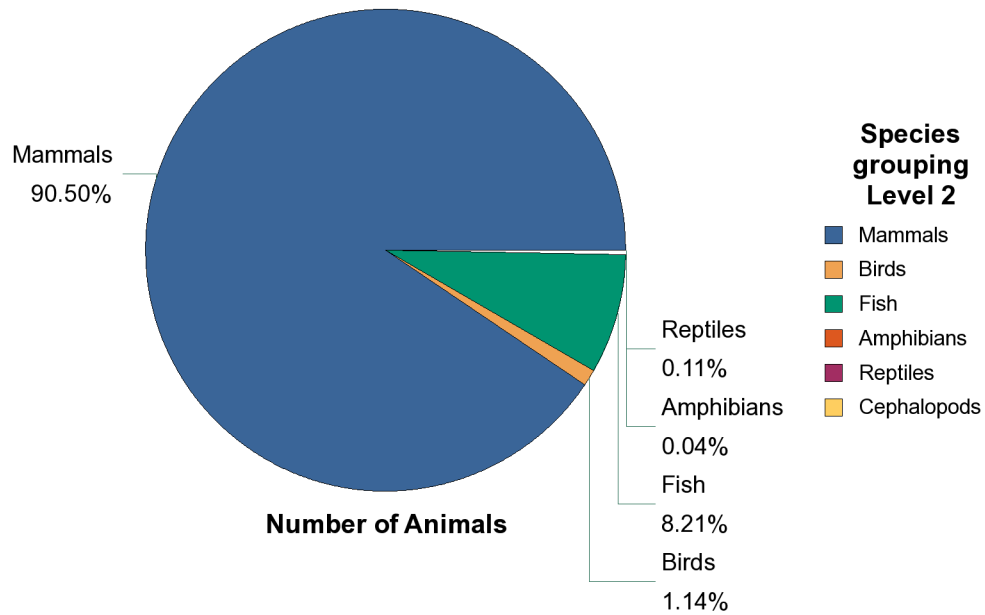
DP.A.1. Animals used by species



Number of Animals



Number of Animals



Number of Animals

Mammals

- Rodents
- Rabbits
- Carnivores
- Equidae
- Artiodactyla
- Non-human primates
- Other mammals